



INSIGHTS

Empowering Lives, Inspiring Change

A MESSAGE FROM THE PRESIDENT, JOHN SEE TOH

I am proud to introduce **SAVH Insights**, our quarterly newsletter for everyone in our community. Through these updates, we share the impact of our work and the journeys of persons with visual impairment.

Persons with visual impairment continue to face challenges in independence, employment, and daily living. As we begin the new financial year in April, **SAVH is strengthening our response through initiatives that create more opportunities** for our clients – including the **SAVH Academy** to build long-term capabilities, the **Employability and Employment Programme** to support sustainable employment, and a **reimagined White Cane Club and Day Care Centre** to enhance daily well-being and connection.

As we mark our 75th year, these efforts reflect our continued commitment to empowering clients with confidence, independence, and dignity. **With your support, we can deepen our impact and reach more individuals on their journey toward independence.**

We invite you to stay engaged and journey with us as we work towards a more inclusive society.



NEW

A SAFER, SHELTERED WALKWAY AT SAVH

Thanks to the generous support of Farm City, who partially sponsored a newly completed sheltered walkway at our premises. **This walkway connects main entrance to the Yusof Building, providing safer and more comfortable access for all.**

Later this year, tactile tiles and guided rails will be added to further strengthen navigational support for visually impaired clients, allowing them to navigate more confidently. All our stakeholders will now benefit from improved accessibility and protection from the elements.



STRENGTHENING OUR FOUNDATIONS & IMPACT

IMPACT AT A GLANCE IN THE PAST QUARTER

2205

BENEFICIARIES SERVED FROM
JAN TO MARCH*

127

ASSISTIVE DEVICES
DISTRIBUTED

SUPPORTING OVER 2,200 INDIVIDUALS IN THE PAST QUARTER! ENABLING GREATER INDEPENDENCE THROUGH SERVICES, TRAINING, AND ASSISTIVE TECHNOLOGY.


 NS MARK
GOLD

SUPPORTING OUR NS MEN

We are elated to share that **SAVH has been awarded the NS Mark (Gold)** accreditation by the Ministry of Defence (MINDEF) in Mar 2026. This recognition honours organisations that actively support National Service and Singapore's Total Defence. Achieving Gold **highlights SAVH's commitment to fostering a supportive and inclusive workplace for our NSmen**. We look forward to continuing these efforts as we work towards the highest tier – the Total Defence Award!

SAVH IPC STATUS HAS BEEN EXTENDED

This means your **donations continue to be tax-deductible**, allowing you to maximise your impact while supporting persons with visual impairment. Thank you for your continued trust and support.

DONATION



**Beneficiaries have been served at our following services: Skills Development Programme (SDP), Social Work Department (SWD), Day Care Centre (DCC), Assistive Devices Centre (ADC), Low Vision Clinic (LVC), Orientation & Mobility (OMD), Library Service (LIB) and White Cane Club (WCC)*

JOURNEYS OF EMPOWERMENT



CLIENT STORY: AARON'S JOURNEY



Meet Aaron – a story of strength, creativity, and unstoppable spirit! Growing up with glaucoma, Aaron's early years were not too different from other children. However, his eyesight deteriorated so rapidly that he began missing school for long stretches at a time. His journey towards independence took a meaningful turn when he found SAVH.

After going through **SAVH's Basic Cane Techniques (BCT) and Orientation & Mobility (O&M)**, Aaron gained more confidence travelling alone. He became more independent when he took charge of his own daily functioning and learning.

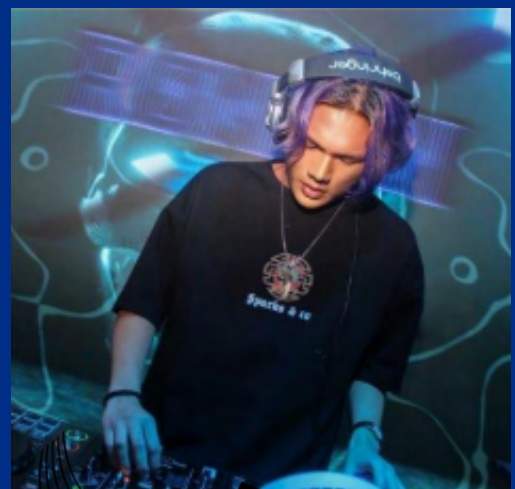
Working as a massage therapist at the Mobile Massage Team (MMT) gave Aaron a renewed courage and confidence. It not only allowed him to support himself but also to rediscover a sense of purpose and dignity.

Despite these hardships, **Aaron found a way to stay positive through music and remained to be an outgoing, extroverted, open-minded person.** Music has also comforted Aaron in different ways such as listening to a mix of genres and expressing himself through DJing.

“

Self-love and self-acceptance are very important in this journey. If you don't keep a positive mindset, it would be difficult to go far in life. Being able to face challenges and improving yourself is a key in my life journey. Losing one thing does not mean that I will not gain anything else in life.

– Aaron, SAVH Client & MMT Masseur



JOURNEYS OF EMPOWERMENT

CLIENT STORY: ADELINE'S JOURNEY OF RESILIENCE AND FRIENDSHIP



For 63-year-old Adeline Vejaletchmy, living with visual impairment has been a lifelong journey of resilience and rediscovery. Born with coloboma, a congenital eye condition, she has significant vision loss—around 10% in her right eye and 40% in her left. Her journey with the **Singapore Association of the Visually Handicapped (SAVH)** began at age eight, when she was referred to the association after being certified blind.

“

Upon receiving my diagnosis, my mother was very upset and depressed.

After she joined SAVH, she met many others like her and started learning important life skills. The social workers and volunteers were also very encouraging towards her.



“I learned to create different items and realised that I can actually do art!” she shares. The friendships she formed with fellow clients have also been a source of joy.

“

We always encourage one another. It feels like one family.

Earlier this year, a shoulder fracture made daily activities difficult, but the Day Care Centre staff helped her regain mobility and stay active. Today, she continues to attend exercises and activities that keep her engaged and connected.

STEP FORWARD WITH SAVH – SUPPORT OUR CAUSE



SUPPORT US FOR FLAG DAY 2026

SAVH Flag Day – 25 April 2026

For 75 years, SAVH has supported individuals in building confidence, gaining skills, and living independently. As needs continue to grow, your support helps us strengthen programmes that empower lives at every life stage of the visually impaired.

This year, we invite you to be part of this journey **Join us at Toa Payoh, Bishan, Ang Mo Kio, and Serangoon (NEX B2 Event Plaza)** and take a step towards building a more inclusive society. Whether through your presence or your contribution, every action makes a significant difference.

With support from Tote Board’s Enhanced Fund-Raising Programme, every donation is boosted by an additional 40% in matching contributions.

DONATE

WALK UNAFRAID WITH US

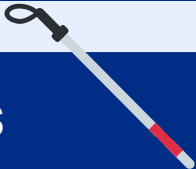
Walk Unafraid 2026 – March to November

SAVH is all about empowering persons with visual impairment to live with independence, confidence, and dignity.

In this campaign every step we take supports mobility training, employment opportunities, assistive technology, and inclusive community programmes.

Take part in our 750-step blindfold walk with a sighted guide and share your experience on Facebook or Instagram. Be among the first 10 participants to receive a limited edition 75th Anniversary Cap.

FIND OUT MORE



OUR COMMUNITY IN FOCUS



COMMUNITY ENGAGEMENT

Women's Self Defence Talk

Safety and empowerment go hand in hand.

On 16 December 2025, **SAVH conducted a women-only defence session for 12 visually impaired participants**, supported by volunteers and instructors from Evolve MMA.

Through a combination of safety awareness and hands-on practice, **participants learned how to identify potential risks, assert themselves and respond to real-life situations.** From recognising sensory cues to practising techniques for escaping common grabs, the session equipped them with practical skills to stay safe and independent.



“

I used to feel anxious travelling alone. Now I feel more confident and prepared

- Alice (name changed for privacy)

Programmes like these empower persons with visual impairment not just with skills, but with confidence, dignity and the freedom to navigate the world safely.



CELEBRATING OUR SENIORS

Chinese New Year Lo Hei

During the festive season, our staff hosted a Lo Hei celebration at the Day Care Centre. Seniors took turns tossing ingredients while calling out auspicious wishes for good luck and prosperity, creating a lively atmosphere filled with laughter and joy.

Our seniors worked together to form auspicious Chinese characters using peeled oranges. With support from our Braille Production Centre, the characters were embossed on paper so clients could experience through touch.



PEOPLE BEHIND THE WORK

75 YEARS STRONG: ANNIVERSARY LOGO WINNER

We took a moment to reflect on the journey that has brought us here and invited our team to be part of shaping how this milestone is remembered through a logo design contest.

We are delighted to share that **the winning design was created by Serene Yap from our Corporate Governance team, whose concept stood out for both its meaning and heart.**

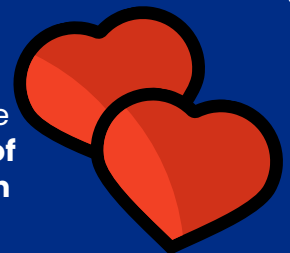


Her design tells a story of movement and progress. **At its centre is a flowing gold “75”, its sweeping curves symbolising not just celebration, but the many journeys taken by our clients, our community, and the organisation itself. A radiant star sits at the top, with smaller stars trailing behind, representing hope, guidance, and the countless lives that have been touched along the way.**

Anchoring the design is the phrase **“Walk Unafraid”**—a quiet but powerful reminder **of the courage it takes to navigate the world with confidence**, and the role SAVH continues to play in making that possible. Way to go Serene! Let’s go team SAVH!

CELEBRATING OUR SOCIAL WORKERS

In conjunction with **World Social Worker Day (17 March)**, we would like to take this opportunity **to recognise and appreciate the dedication of our social workers, who continue to make a meaningful difference in the lives of our clients every day.**



We are proud to share a recent **compliment received for our social worker, Eric Koh.** A client who has been under Eric’s care for the past two years wrote in to express his heartfelt gratitude to Eric.

In his message, **he described Eric as a “pillar of support” who consistently demonstrated resourcefulness and deep knowledge of the social welfare system. He also highlighted Eric’s kindness, courtesy, and understanding nature and his admirable “never-say-die” attitude in helping others.** This commendation is a strong reflection of Eric’s professionalism, compassion, and unwavering commitment to service excellence.

HIS EFFORTS HAVE NOT ONLY POSITIVELY IMPACTED HIS CLIENT’S JOURNEY BUT ALSO EMBODY THE VALUES THAT SAVH STANDS FOR.



THE HEART OF SAVH: OUR PEOPLE

CNY Luncheon & Nature Walk

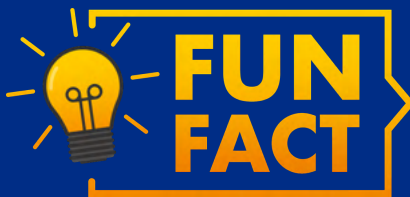
Q: Ever wonder what really keeps SAVH so close-knit?

A: It's our amazing staff and the little moments we share beyond work.

This Chinese New Year, we came together for a joyful Lo Hei luncheon filled with laughter, well wishes, and plenty of playful tossing of yu sheng. The celebration didn't stop there. We continued the day with a peaceful walk at the Singapore Botanic Gardens, slowing down to enjoy nature and each other's company.

In between the laughter and conversations we had, we learned fun facts about our new and current colleagues through a quiz, shared stories, checked in on one another, and enjoyed simple, meaningful moments that often get lost in our busy routines. **These everyday interactions are what strengthen our bonds and remind us that we are more than colleagues at SAVH.**

WE ARE ONE COMMUNITY THAT LOOKS OUT FOR ONE ANOTHER.



DID YOU KNOW? IN 2011, VISUALLY IMPAIRED SINGAPOREANS COULD VOTE INDEPENDENTLY AND IN SECRET FOR THE FIRST TIME. THIS MILESTONE WAS SHAPED BY SAVH WORKING CLOSELY WITH THE ELECTIONS DEPARTMENT AT THAT TIME.



**WE'RE
HIRING**



JOIN OUR TEAM

Behind every programme is a dedicated team committed to empowering lives and supporting persons with visual impairment to live with confidence and independence.

If you are passionate about making a meaningful difference, we invite you to journey with us. Be part of a team that works closely with the community, builds lasting impact, and contributes to a more inclusive society.

We're currently looking for:

- Centre Manager
- Programme Executive (Social Enterprise)
- Orientation & Mobility Trainees
- White Cane Club (WCC) Coordinator

For more details on these roles and application procedures

VISIT OUR CAREER PAGE

CONTACT US

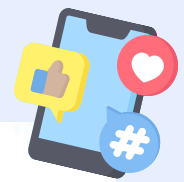


Tel: (65) 6251 4331



www.savh.org.sg

FOLLOW US ON SOCIAL MEDIA



Facebook



Instagram



LinkedIn

